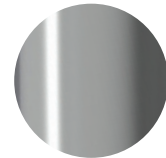


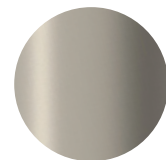


CHROME



Mains 100-5160
Battery 100-5161

BRUSHED NICKEL



Mains 100-5158
Battery 100-5159

Australian designed and manufactured Autoflo Integrated Goose-neck Wave On/Wave Off Sensor Tap is suitable for a range of hand-washing applications, particularly in public commercial areas that experience high traffic and therefore high usage, meaning conservation of water is of paramount importance. The 6-star WELS rating ensures hygienic bathroom environments for users, delivered economically and in an environmentally sensitive fashion.

The robust construction and sleek design are complemented by a range of features ensuring consistent performance. The hygienic self-flush performed every 24-72 hours, dual stage water filtering are just some of what sets apart the Autoflo Integrated Wave On/Wave Off Sensor Tap apart.

FEATURES

- Simple wave-on activation
- Pre-set hands free run time of ten seconds
- Simple plug-n-play installation
- Cold or tempered water
- Dual stage water filters for water quality
- Multiple surface finishes as standard options
- Battery life of 3-4 years

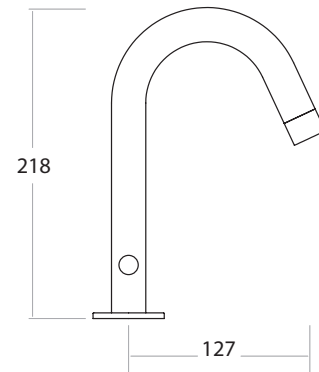


Every effort is made to ensure specifications are correct at the time of printing. Autoflo Pty Ltd reserves the right to make changes without prior notice. All measurements shown are in millimetres.

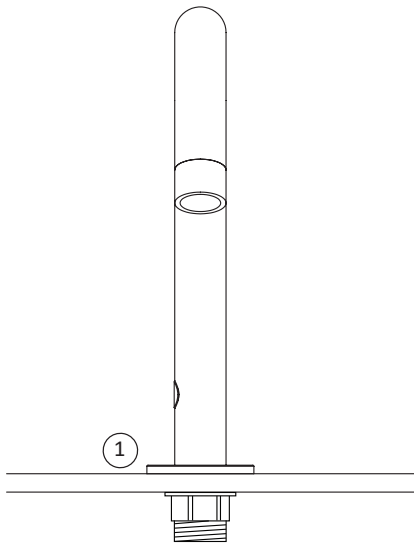
TECHNICAL SPECIFICATIONS

- TAP BODY - Solid brass - plated
- SENSOR OPERATION - wave on/wave off
- SENSOR RANGE - 60mm factory set
- OPERATING SUPPLY - Mains or Battery
- OPERATING PRESSURE - 50 to 500kPa
- FLOW RATING - 4L/min WELS 6 star
- SOLENOID - Latching/soft closing
- MAX TEMPERATURE - 50°C

DIMENSIONS

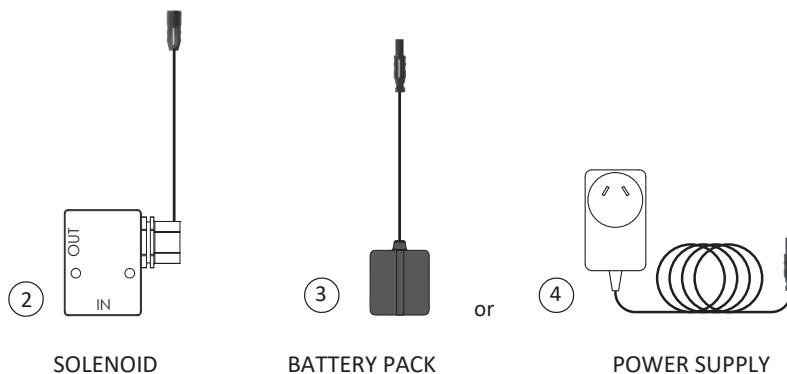


TYPICAL INSTALLATION



COMPONENTS SUPPLIED

1	Spout Assembly with mounting hardware
2	6v Solenoid Valve
3	Battery Pack
4	Power Supply



Autoflo Pty Ltd
www.autoflo.com.au